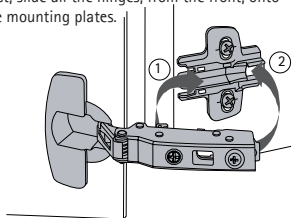
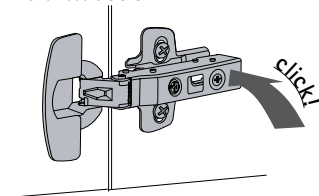


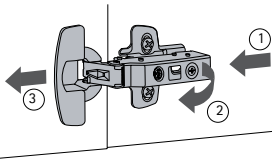
- 1 Assembly**
First, slide all the hinges, from the front, onto the mounting plates.



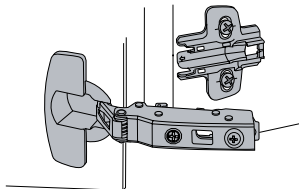
- 2** Then press lightly on each successive hinge until the arm latches onto the mounting plate with an audible click!



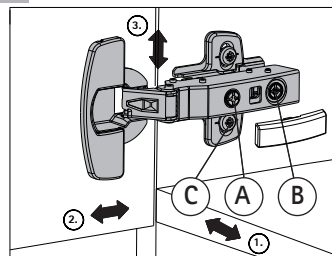
- 3 Disassembly**
It is carried out in the opposite direction from bottom to top. The hinge is unlatched by pressing lightly on latch (1) which is hidden under the side arm.



- 4** In one movement, the hinge arm is lifted off the mounting plate (2) and the door is removed from the cabinet (3).



- i** Remove cover cap for hinge adjustment



Adjustment

- 1. Overlay adjustment: + 2 / - 2 mm**
Turn screw (A) clockwise:
Door overlay decreases (-).
Turn screw (A) anticlockwise:
Door overlay increases (+).
- 2. Depth adjustment: + 3 / - 2 mm**
Direct, infinitely variable depth adjustment by turning the screw (B).
- 3. Height adjustment: + 2 / - 2 mm**
Loosen fixing screws (C) slightly and adjust height of door. Then tighten fixingscrews again.

Technische Änderungen vorbehalten.
Keine Gewährleistung für Druckfehler
und Irrtümer.

Subject to technical alterations.
Errors and omissions excepted.

Sous réserve de modifications techniques.
Notre responsabilité ne sera engagée en cas de fautes de frappe
ou d'erreurs.

Salvo modifiche tecniche.
Nessuna garanzia per errori di
stampa ed errori.

Se reserva el derecho a realizar
modificaciones técnicas. No ofrecemos
garantía alguna respecto a eventuales
erratas de impresión u otros errores.

Technische wijzigingen
voorbehouden.
Wij zijn niet verantwoordelijk voor
drukfouten of andere vergissingen.